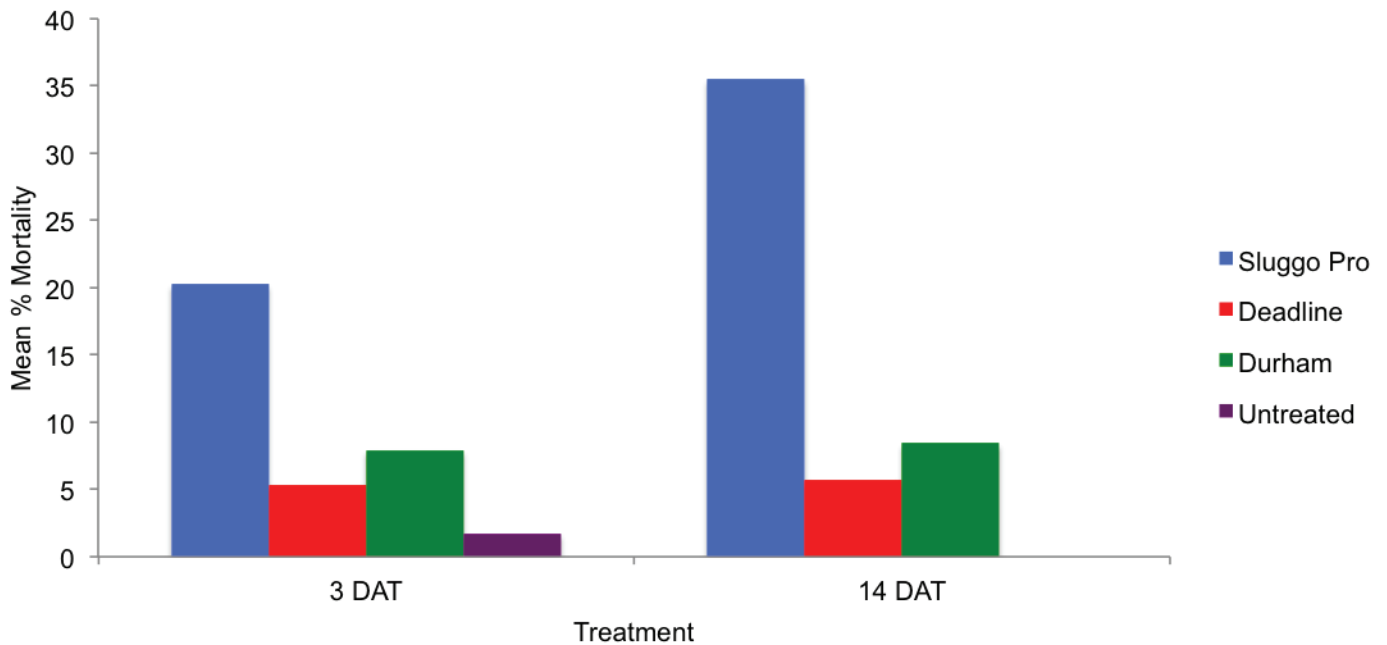


Control of gray garden slugs in artichoke plots with Sluggo Pro or metaldehyde (Bari, California, 2009)



Collaborator: Mohammad Bari, Artichoke Research Association
Location: Salinas, California

Test Methods

Test Species: Gray garden slug (*Deroceras reticulatum*)

Target Crop: Artichoke

Treatment Application Date: Nov. 6, 2009

Evaluation Interval: Live and dead slugs per 10 shoots at 3 and 14 DAT.

Plot Description: 5 replicates/treatment. Field test. Treated block areas: each a single 30 ft long row with approximately 10 plants.

Conclusion: Over the course of two weeks, Sluggo Pro performs better than traditional slug bait.