



# ANTIXX™

ANT AND CRAWLING INSECT BAIT

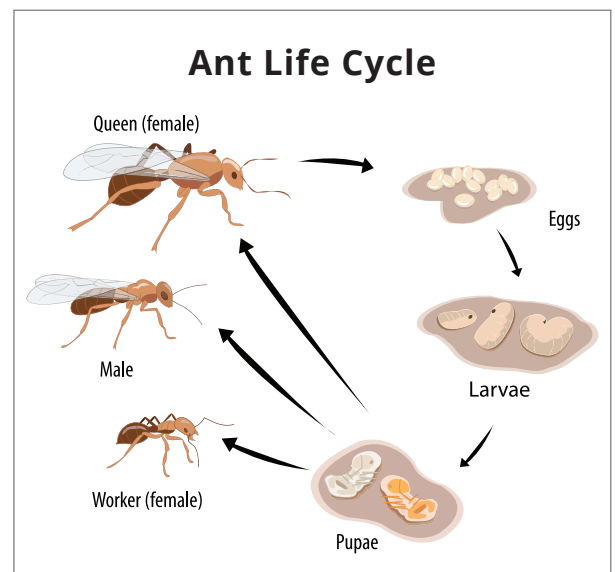
Ideal for sensitive accounts, powerful enough for all accounts.

## ANTIXX Liquid Ant Spray

- Pyrethrin and canola oil
- Fast-acting contact spray
- Controls most common ant species

### Use Sites:

- For use indoors
- Insect hiding places
- Around baseboards, windows
- Around appliances
- Can be used in food preparation areas



[NeudorffPro.com](http://NeudorffPro.com)



# ANTIXX™

ANT AND CRAWLING INSECT BAITS

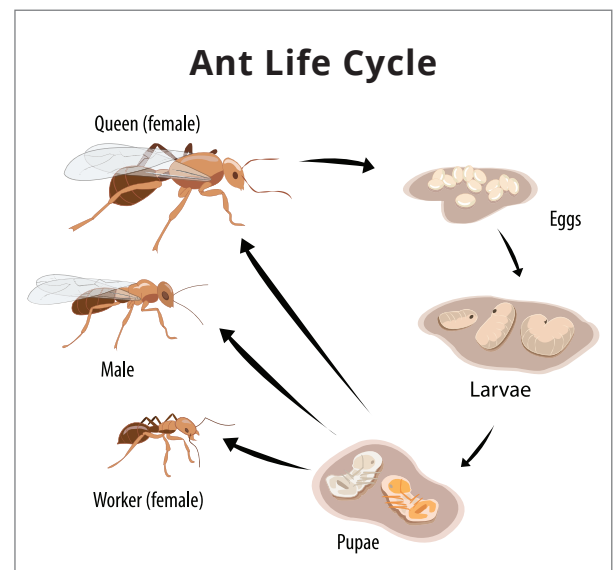
Ideal for sensitive accounts, powerful enough for all accounts.

## ANTIXX Plus Ant Bait

- 1% iron phosphate and 0.07% spinosad
- Controls most common ant species
- UV protective coating
- Patented technology
- People and pet friendly
- Full PCO label
- OMRI® Listed

### Use Sites:

- Outdoor ornamentals
- Turf
- Golf courses
- Athletic fields
- Greenhouses, nurseries
- Non-crop areas,
- Parks, playgrounds
- Cemeteries
- Building perimeters



[NeudorffPro.com](http://NeudorffPro.com)